

CONNECT

local COastal moNitoriNg sErviCe for PorTugal

Sessão de demonstração serviço CONNECT

Lot 4 - Coastal marine (pre)operational services around the European Atlantic Ocean including the North Sea and the Arctic Ocean
(22050L04-COP-INNO USER-9000) of the tenderer
Copernicus Marine – User – EU Coastal Monitoring Pilot Demonstrations (22050-COP-INNO USER)

Laboratório Nacional de Engenharia Civil (LNEC)

Faculdade de Ciências da Universidade de Lisboa (FCUL) - Associação para a Investigação e Desenvolvimento de Ciências (FCID)

14/09/2024



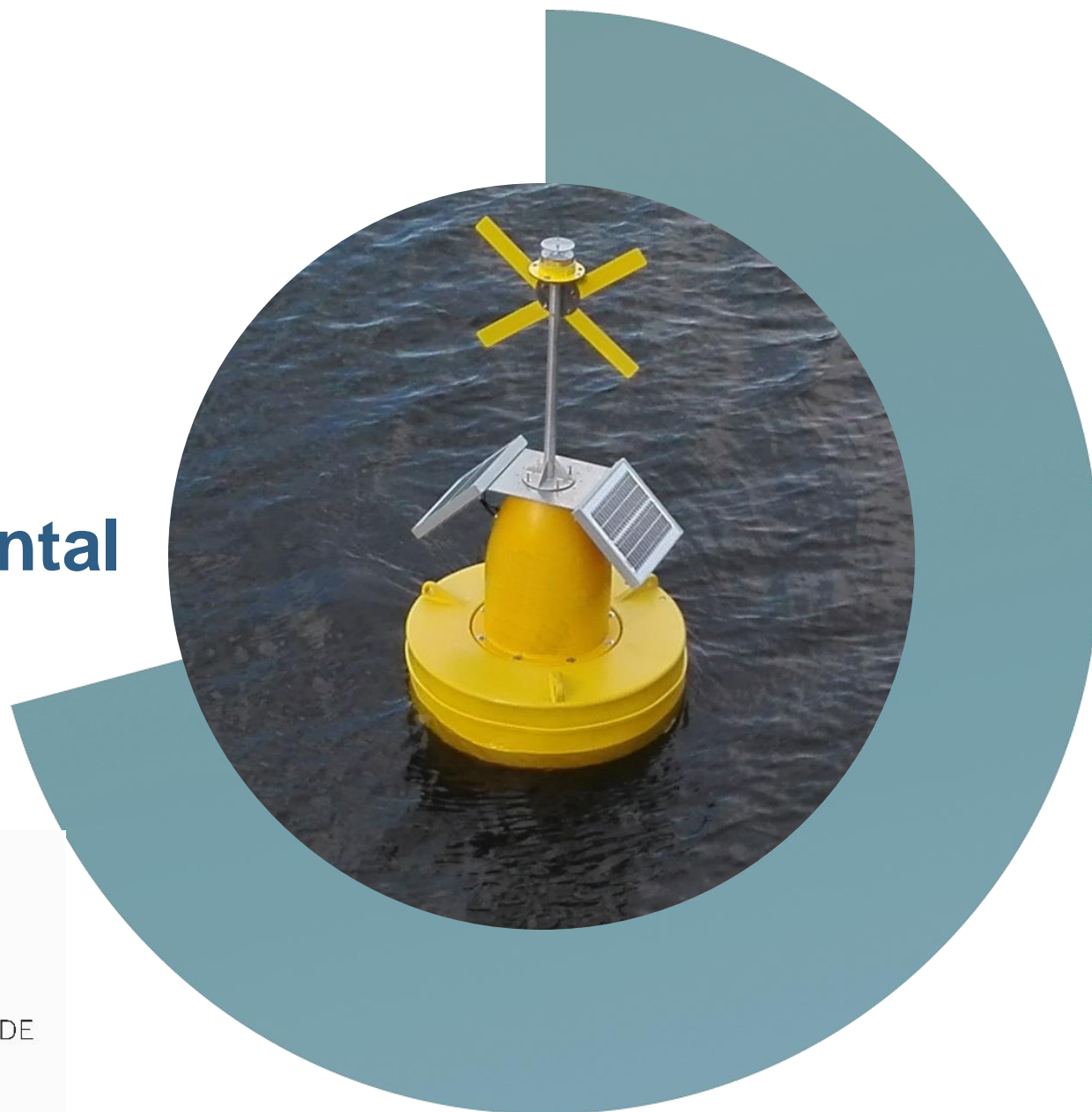
COASTNET

COASTAL MONITORING NETWORK

Rede de Monitorização Ambiental

Ana C. Brito

www.coastnet.pt • coastnet@mare-centre.pt

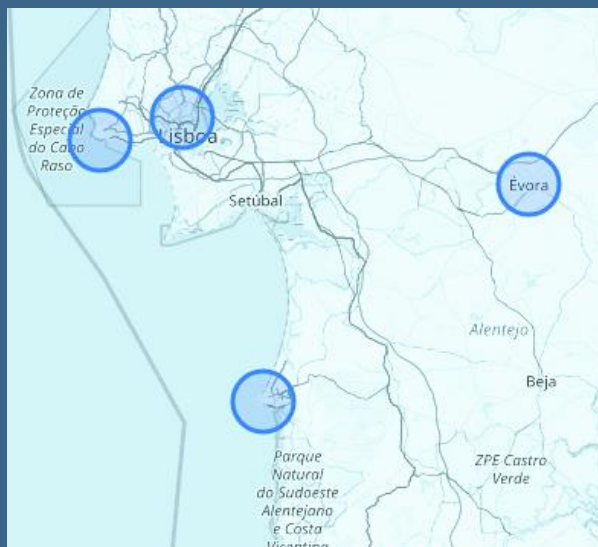




COASTNET
COASTAL MONITORING NETWORK



Promoters



CoastNet é uma infraestrutura de investigação do **MARE**
– parceria entre Faculdade de Ciências da UL (MARE-ULisboa) e a Universidade de Évora (MARE-UE)



Ciências
ULisboa



UNIVERSIDADE
DE ÉVORA



COASTNET
COASTAL MONITORING NETWORK



Equipa Implementação



José Lino Costa
Coordinator



Ana Brito
Implementation Team



Bernardo Quintella
Implementation Team



Henrique Cabral
Implementation Team



Luís da Costa
Implementation Team



Paola Castellanos
Implementation Team



Paula Chainho
Implementation Team



Susana França
Implementation Team



COASTNET
COASTAL MONITORING NETWORK



Funding, Networks and Associations

FCT Fundação
para a Ciência
e a Tecnologia

Cofinanciado por:



UNIÃO EUROPEIA
Fundo Europeu
de Desenvolvimento Regional

Lisb@20²⁰

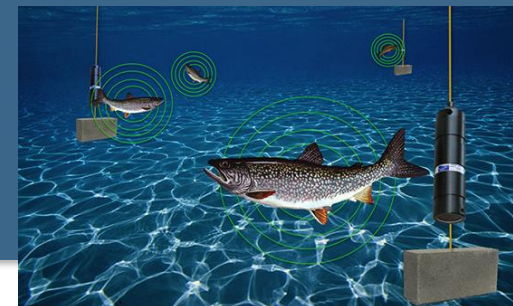


Incluída no Roteiro Nacional de Infraestruturas de Investigação de Interesse Estratégico (RNIE – FCT)

FCT
Fundação para a Ciência e a Tecnologia
MINISTÉRIO DA CIÊNCIA, TECNOLOGIA E ENSINO SUPERIOR

**PORTUGUESE
ROADMAP
OF RESEARCH
INFRASTRUCTURES
– 2020 Update**

FCT – Fundação para a Ciência e a Tecnologia





Visão

Ligar as Pessoas ao Oceano



Missão

Melhorar o conhecimento acerca do funcionamento dos ecossistemas costeiros Portugueses, através do desenvolvimento de um sistema de monitorização costeiro



COASTNET
COASTAL MONITORING NETWORK



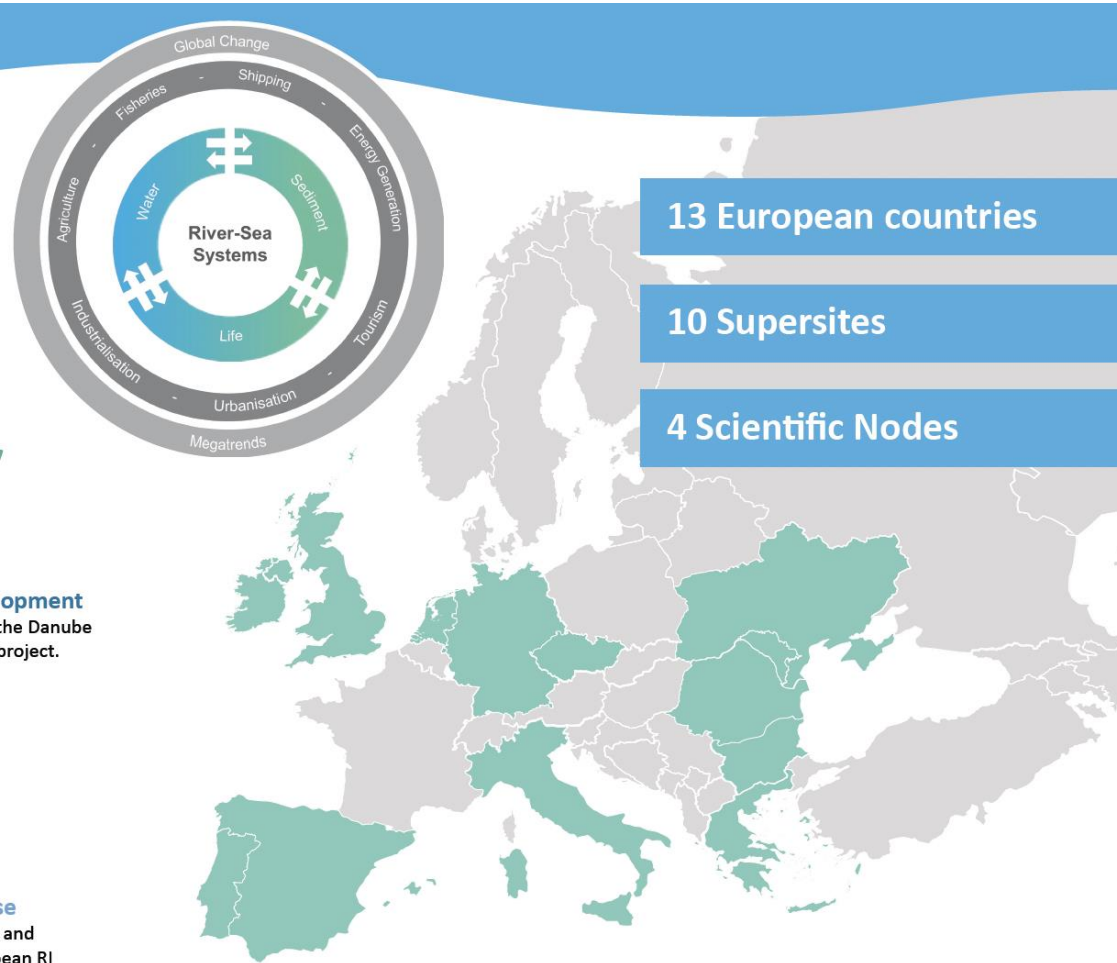
Funding, Networks and Associations

CoastNet is now part of the EU **DANUBIUS** Research Infrastructure
(**DANUBIUS-RI**)

Making River-Sea Systems Work



From the river source to sea, DANUBIUS-RI provides state-of-the-art research infrastructure to sustainably manage River-Sea Systems.



DANUBIUS-RI

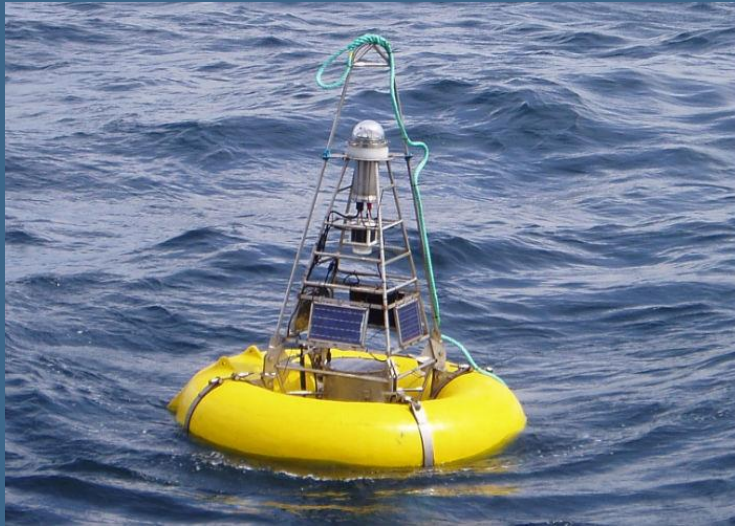
Mission: facilitate and contribute excellence science to the continuum from river to sea

Vision: achieve healthy River-Sea Systems and sustainable use

Goal: to overcome fragmentation of science, knowledge, data & management



Objectives



- ✓ **Promote observations and measurements on the Portuguese coast, either remotely or on the water, predominantly continuously;**
- ✓ **Integrate and allow the visualization of the data obtained;**
- ✓ **Allow free and near real-time access to the data collected, as well as to historical data compiled;**
- ✓ **Develop a set of products and indicators for the coastal zone;**



COASTNET
COASTAL MONITORING NETWORK



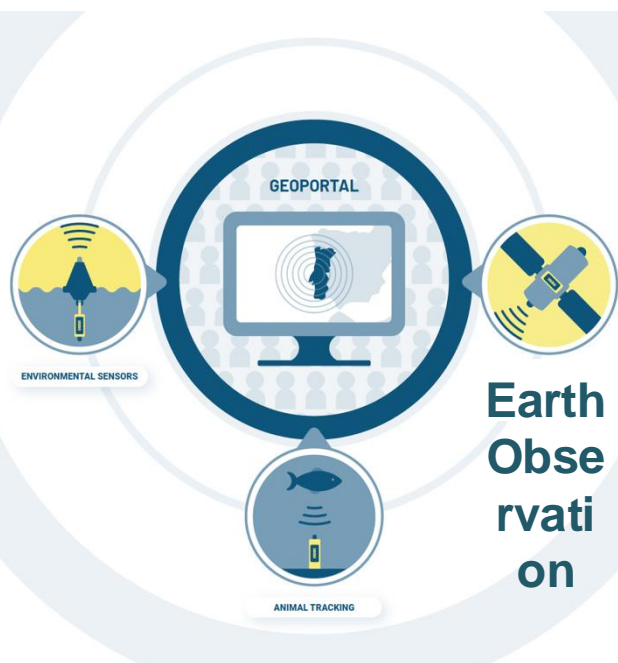
Action Lines

1. Sistema de Detecção Remota Costeira

2. Rede Nacional de Recetores de Biotelemetria Aquática

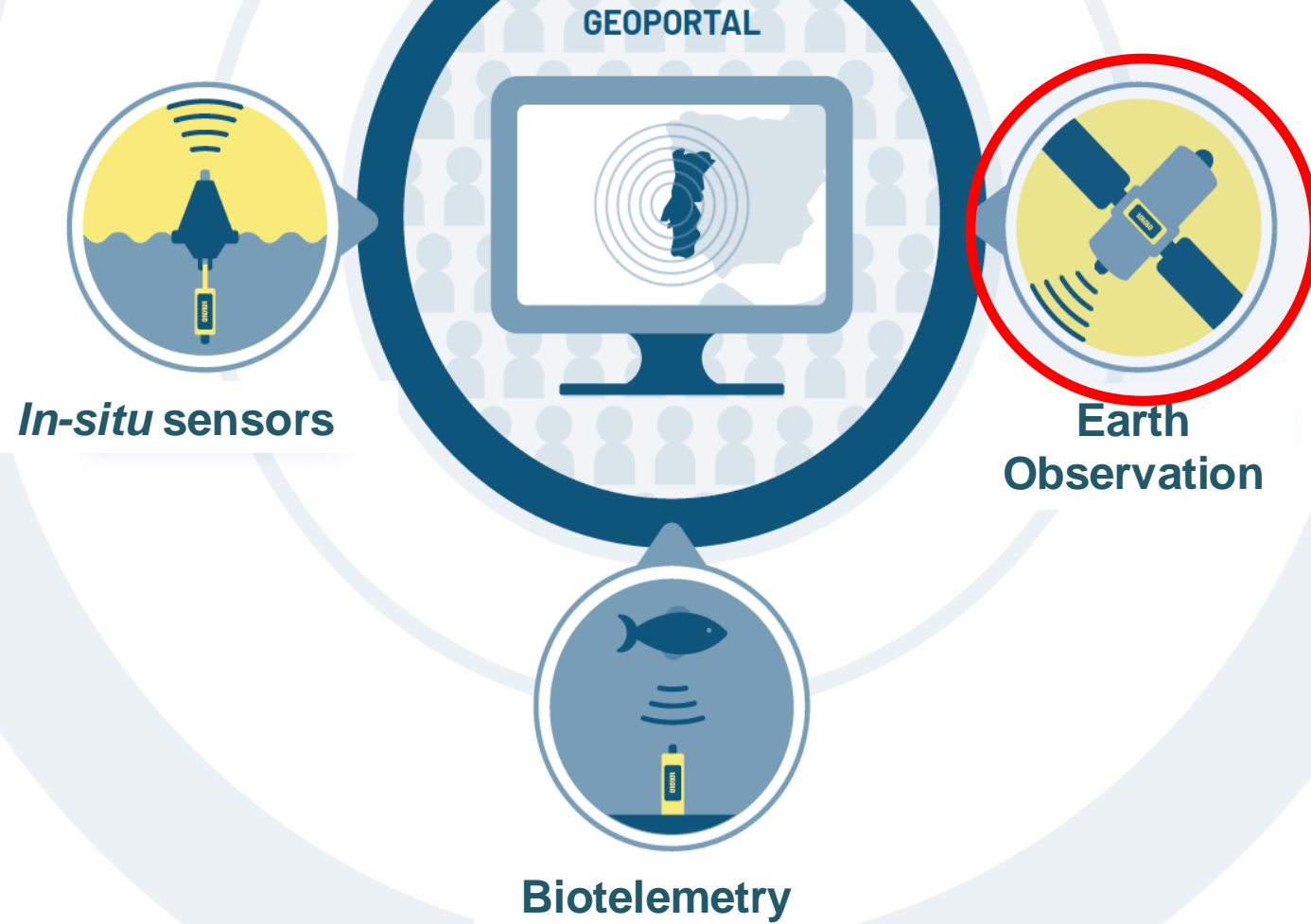
3. Sistema de Monitorização Ambiental e Biológica

4. Plataforma digital CoastNet (Geoportal)





Lines of Action:





COASTNET
COASTAL MONITORING NETWORK



Coastal Remote Sensing System (CRSS)



Objectives

- ✓ Aggregate satellite data for the PT coastal region and make them available – *Standard*
- ✓ Develop new products for our coastal zone (UI), freely available from Geoportal – *indicators*
- ✓ Temporal dataseries (~20/30 years worth of data) vs NRT monitoring

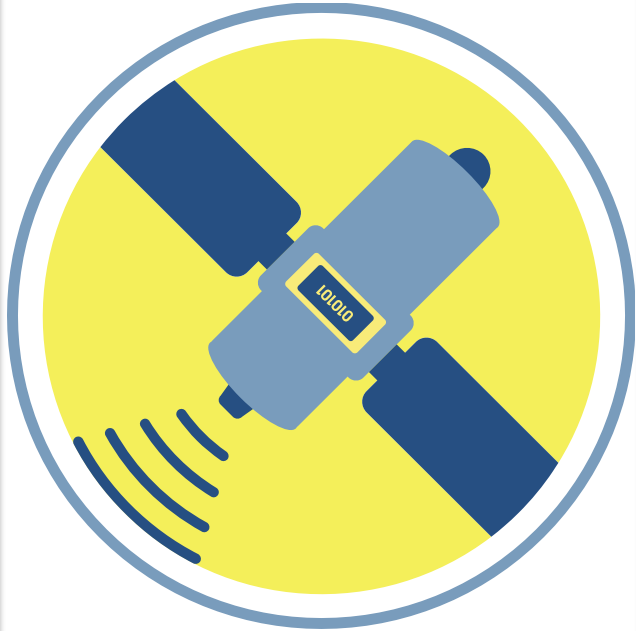


COASTNET
COASTAL MONITORING NETWORK



Coastal Remote Sensing System (CRSS)

Products available (*standard*)

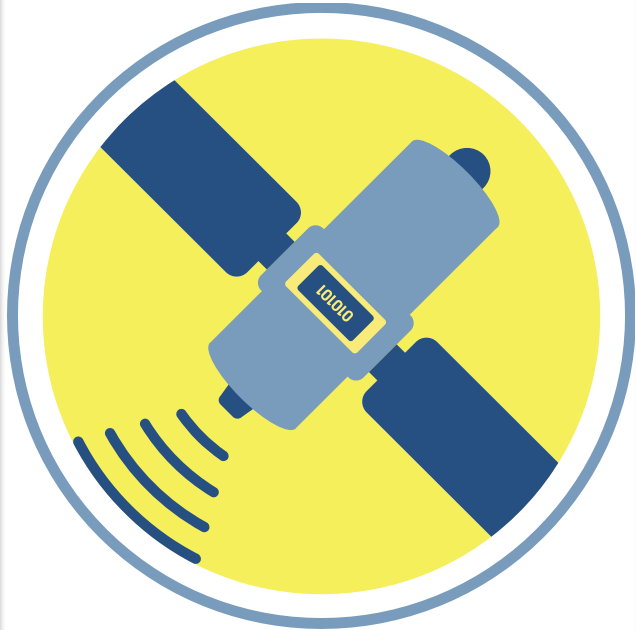


- Temperature (SST)
- Chlorophyll *a*
- Sea Surface Height
- Wind Speed/Stress
- Sea water velocity
- Salinity



Coastal Remote Sensing System (CRSS)

New products (*indicators*)



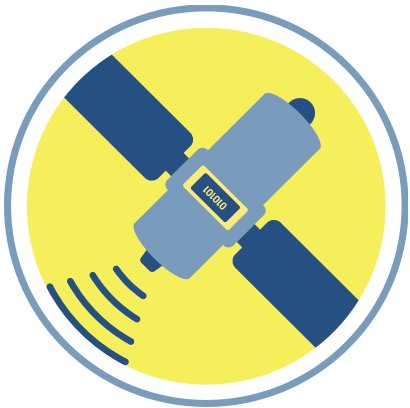
- Upwelling Index
- Fronts
- *Phytoplankton size class*
- Water Quality Index



COASTNET
COASTAL MONITORING NETWORK



Coastal Remote Sensing System (CRSS)



Satellite Data



Access to data, download and
processing using:
INCD Cluster (National Distributed
Computing Infrastructure)

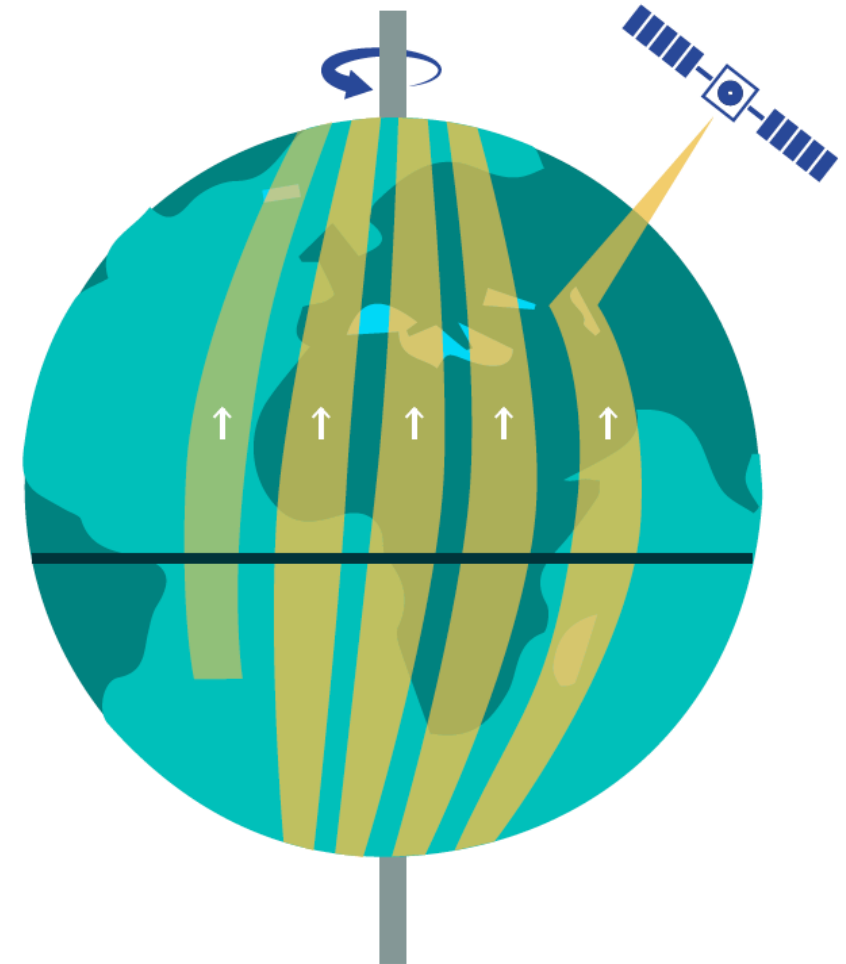


All data available in the
CoastNet's Geoportal



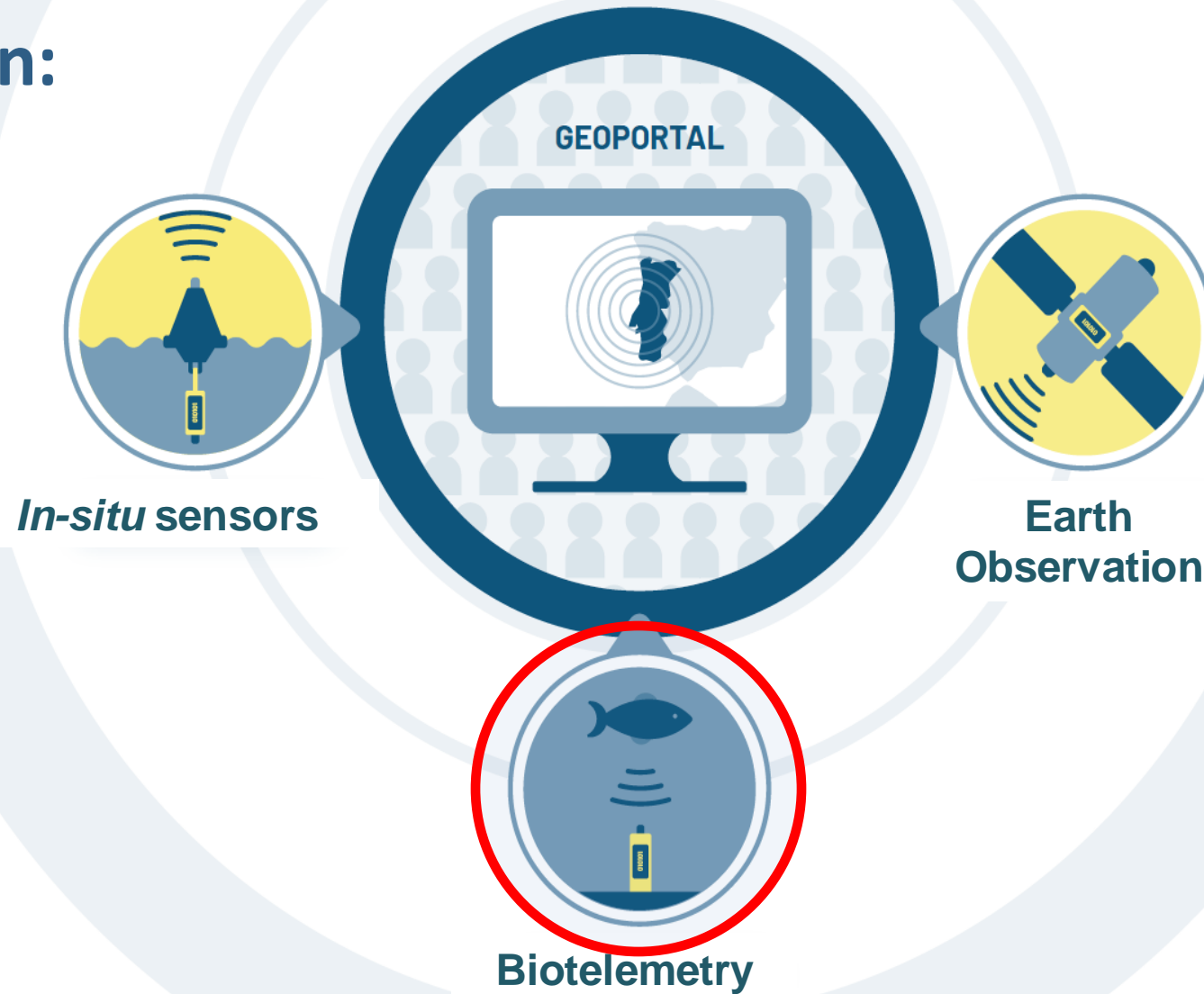
Importance of RS data in Coastnet

- Time-series & NRT data
- Development of new products to comply with EU Directives (e.g. WFD, MSFD)
- Integration of different data sources: **i)** satellite; **ii)** in-situ sensors; **iii)** biotelemetry receivers; **iv)** historical data





Lines of Action:





Portuguese Tracking Network

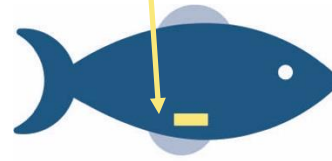
- **For what?** Monitoring movement of aquatic organisms;
- **Where?** Coastal zone, estuaries and rivers;
- **How?** Record of acoustic signal transmitted by animal tags





How does

Acoustic Transmitter



Acoustic Receiver

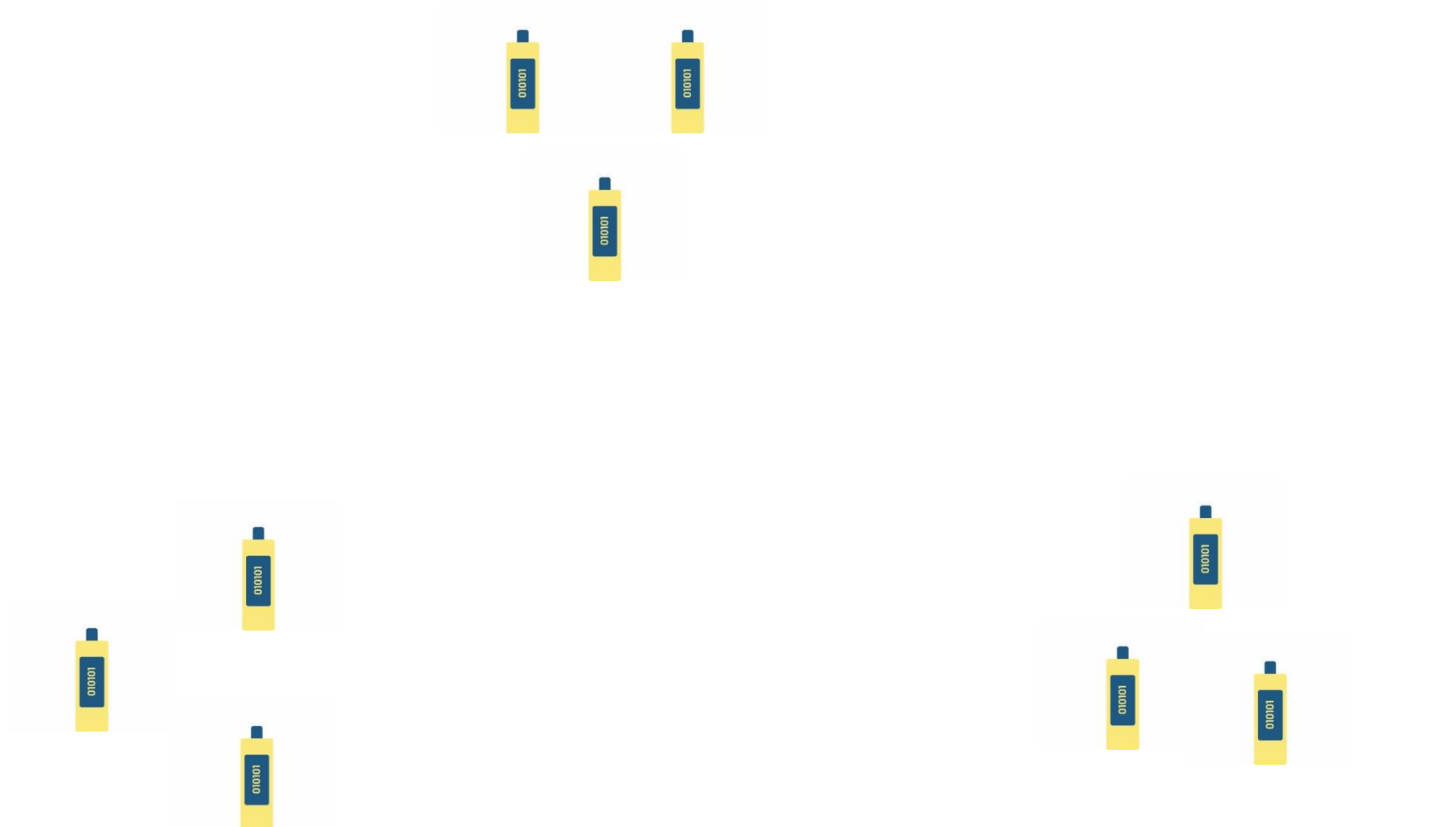
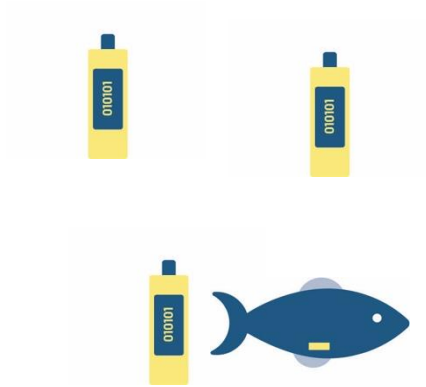




COASTNET
COASTAL MONITORING NETWORK



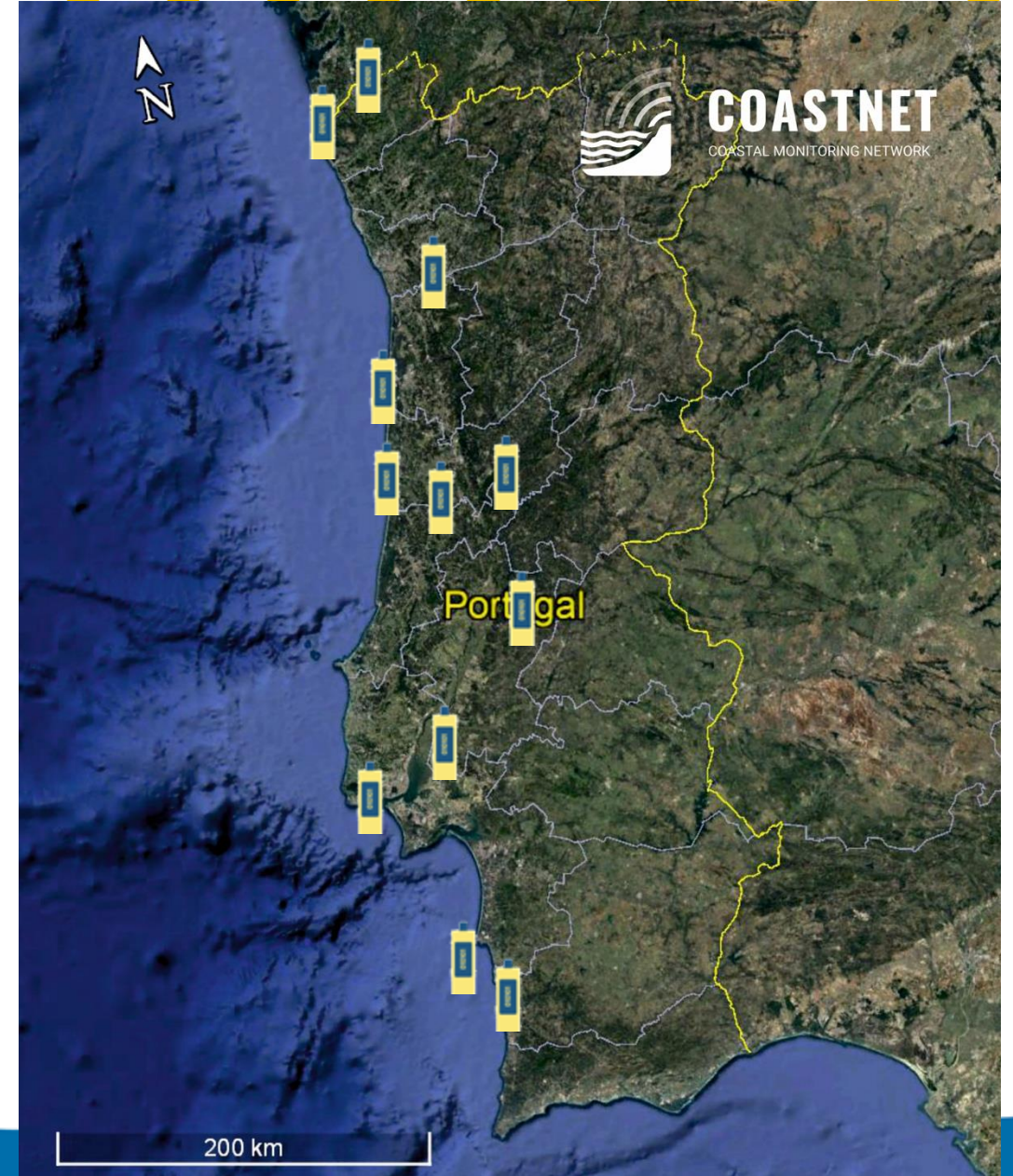
How does it work?





COASTNET
COASTAL MONITORING NETWORK

Portuguese Tracking Network





Tejo estuary - Local Network

← → ↻ ⓘ Inseguro | geoportal.coastnet.pt/#

Lat: 38.746 Lon: -9.254

COASTNET
COASTAL MONITORING NETWORK

Master layer

< >

	TEJO_#072		<input checked="" type="checkbox"/>
	TEJO_#071		<input checked="" type="checkbox"/>
	TEJO_#070		<input checked="" type="checkbox"/>
	TEJO_#069		<input checked="" type="checkbox"/>
	TEJO_#068		<input checked="" type="checkbox"/>
	TEJO_#067		<input checked="" type="checkbox"/>
	TEJO_#066		<input checked="" type="checkbox"/>
	TEJO_#065		<input checked="" type="checkbox"/>
	TEJO_#064		<input checked="" type="checkbox"/>

Corvina-legítima

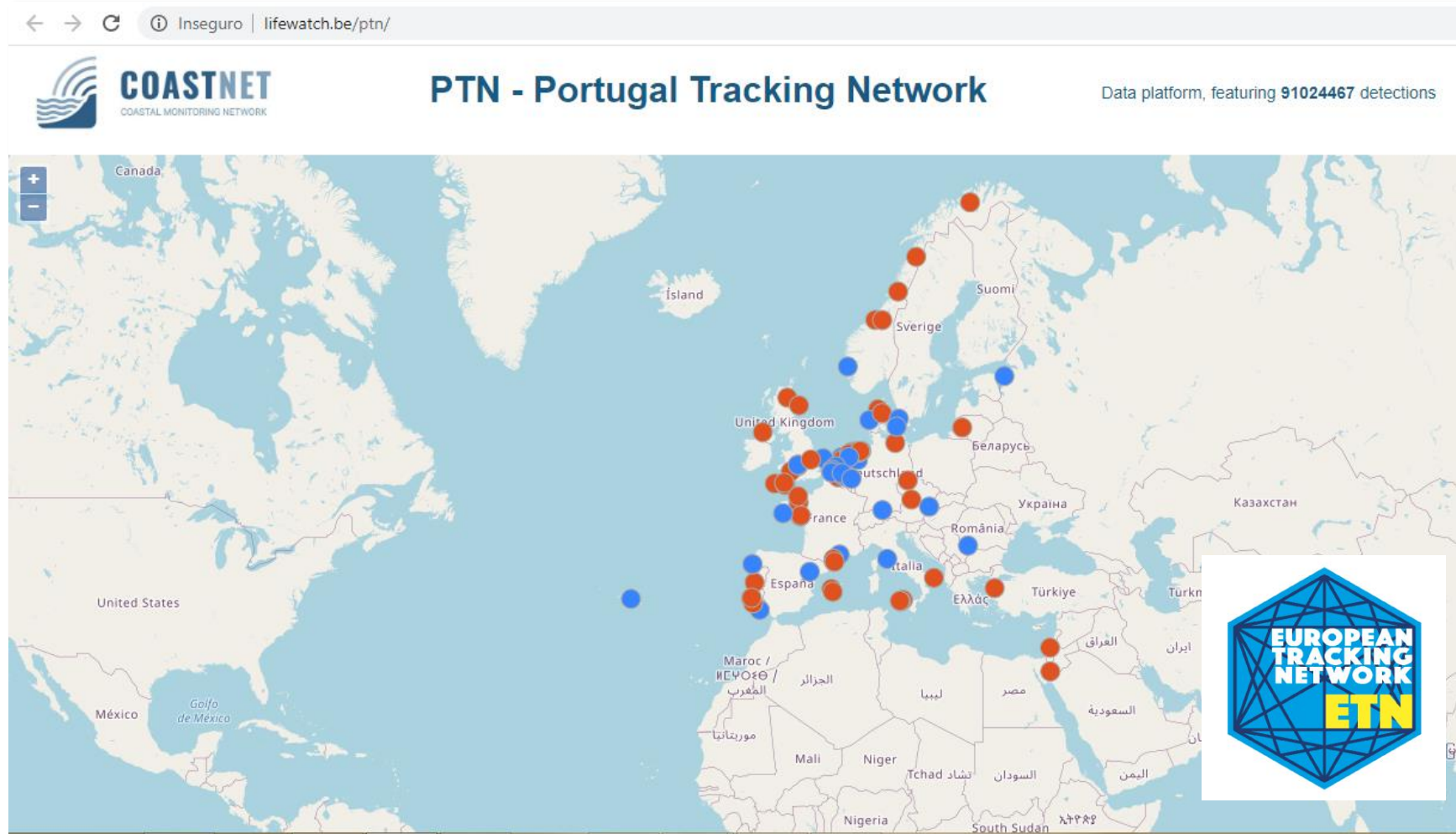
Leaflet | Powered by Esri | Earthstar Geographics



COASTNET
COASTAL MONITORING NETWORK

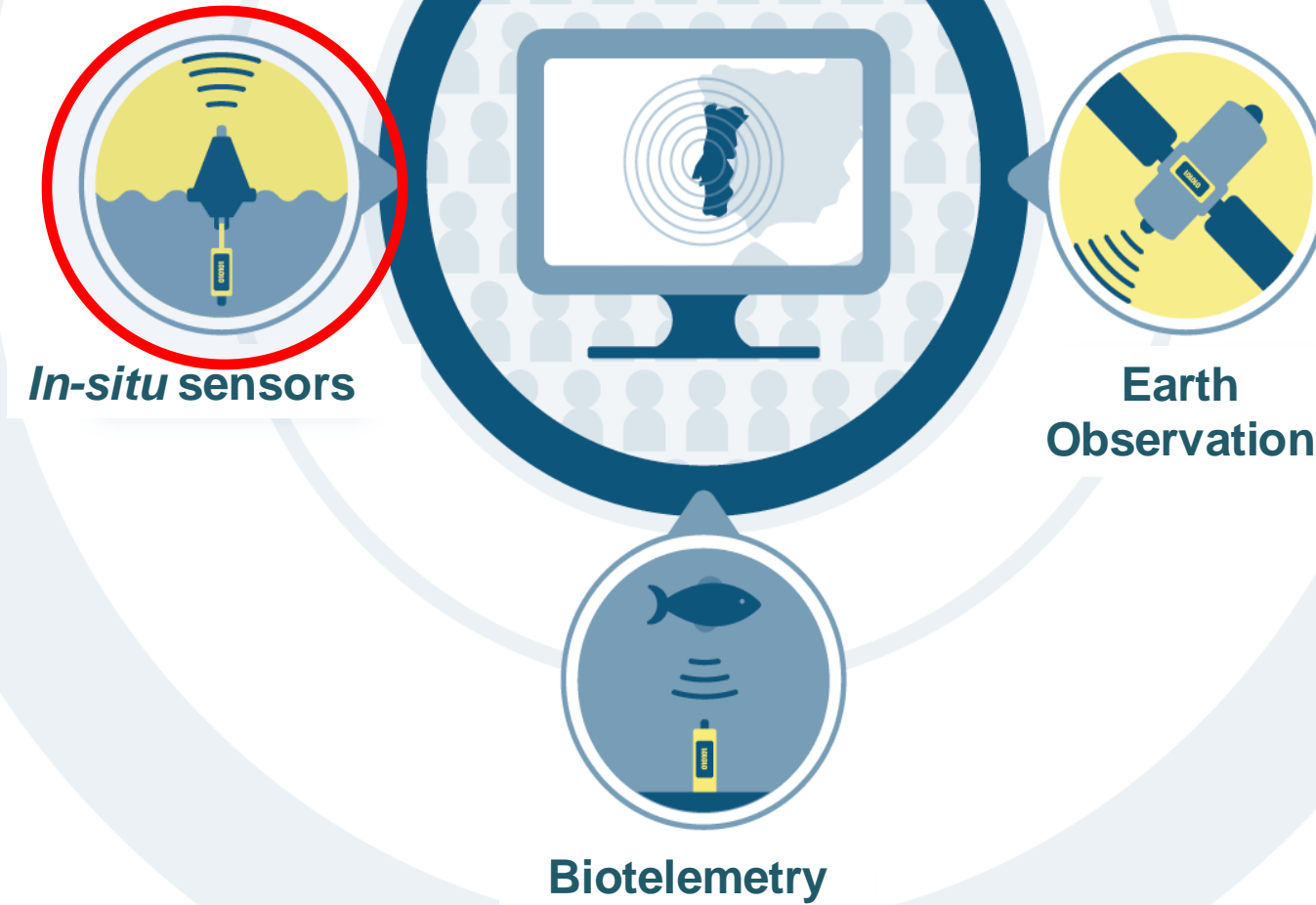


Data sharing Platform



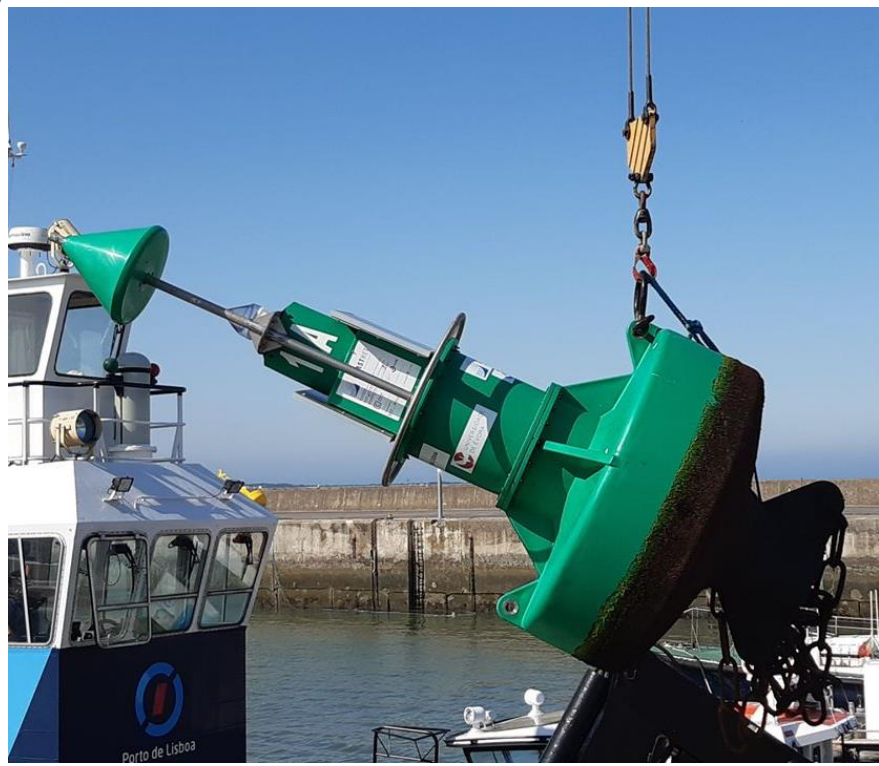


Lines of Action:





Environmental and Biological Monitoring System (EBMS)



Objectives

- ✓ Continuous and autonomous measurement of environm. parameters
- ✓ Key parameters for studying the structure of aquatic biological communities
- ✓ 3 estuarine systems
- ✓ 3 buoys in each system that cover the salinity gradient



Mira Estuary – Location and Deployment



June 2019







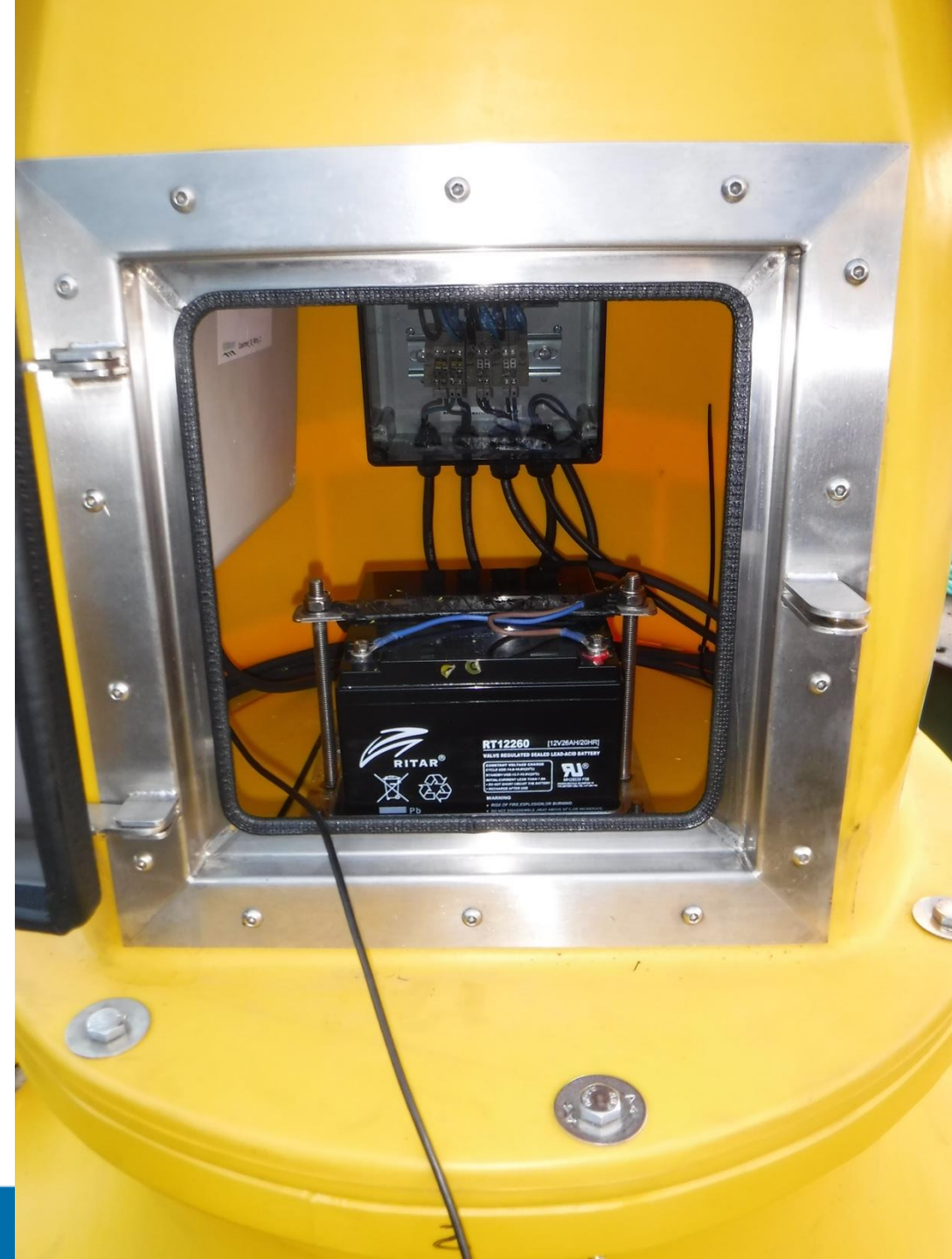
Deployment of the EBMS-Mira in June 2019



concrete anchors - 3 Tons







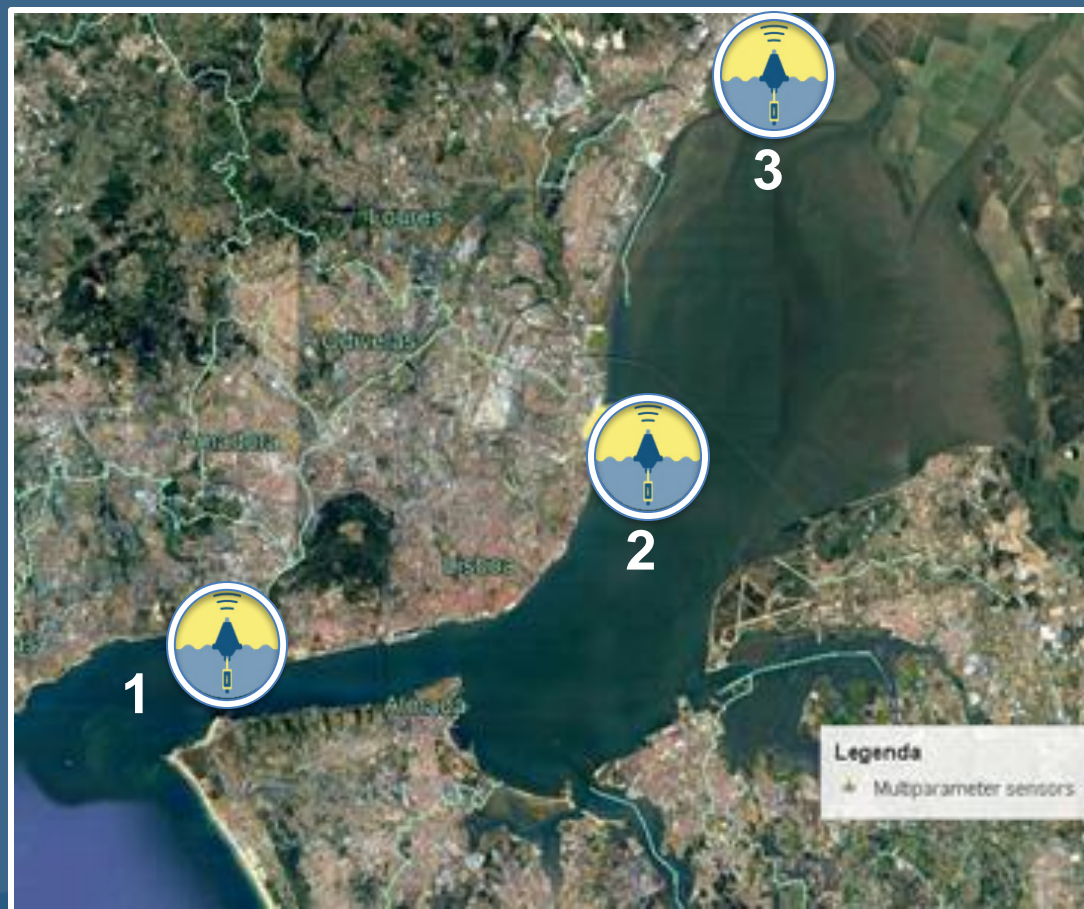




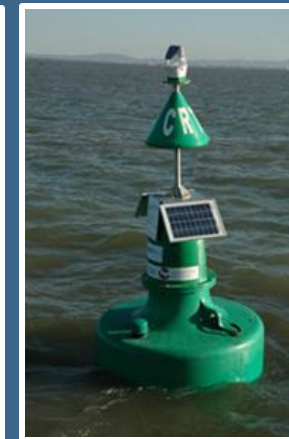
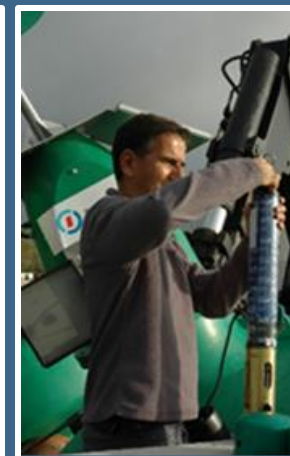
COASTNET
COASTAL MONITORING NETWORK



Tejo Estuary – Location and Deployment



Sept-Oct
2019





COASTNET
COASTAL MONITORING NETWORK



Porto de Lisboa



Deployment of the EBMS-Tejo in September 2019



COASTNET
COASTAL MONITORING NETWORK



Mondego Estuary – Location and deployment

Oct-Nov 2019





COASTNET
COASTAL MONITORING NETWORK



Mondego Estuary – Location and deployment





Environmental Parameters and System characteristics



- Salinity
- Temperature
- Dis. Oxygen
- pH
- Chlorophyll *a*

- Solar Panels
- GPS
- Off Station Alarm
- Always at surface
(~0.5m)



Measurement and Data transmission



Measurements
every 15 min



Data storage at
logger



Data transmitted
(GPRS) 4 times per
day



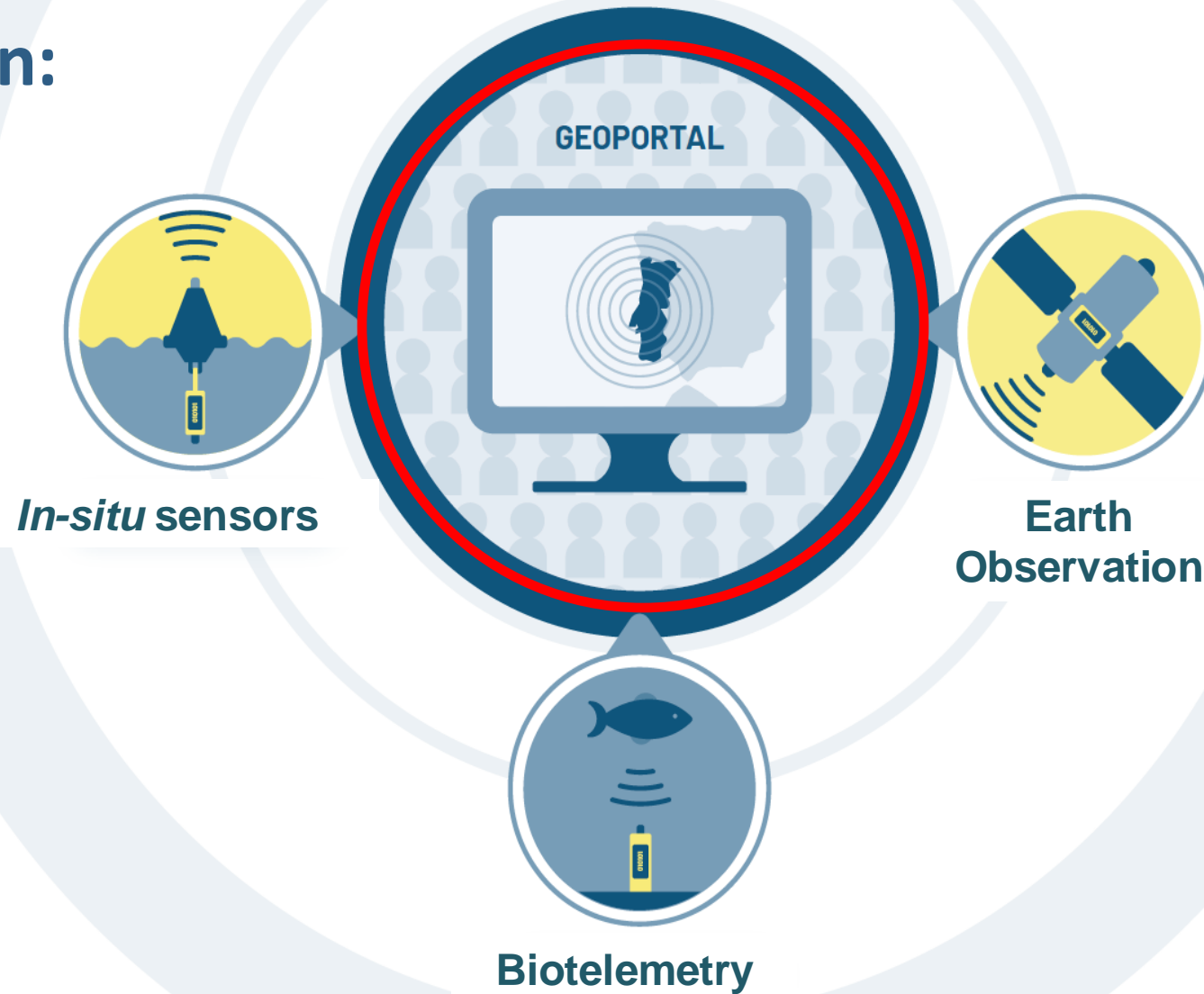
Data available in the
Geoportal



- ✓ NRT (NRT)
- ✓ Time Series



Lines of Action:





×

?

HELP

Master layer

Satellite


In-situ Sensor

>

Please select a Group above

Lat: 55.279

Lon: 19.775



COASTNET
COASTAL MONITORING NETWORK

Select type of product

Functionalities: time-series; download; statistics

Leaflet | Powered by Esri | Earthstar Geographics

<http://geoportal.coastnet.pt>



HELP

Chlorophyll-a concentration 4...

Satellite In-situ Sensor

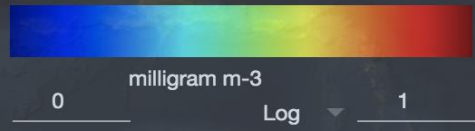
Near Real Time

Time Series

- ☒ Ocean Colour
- ☐ Chlorophyll-a con...
- ☒ Chlorophyll-a con...
- ☐ Std deviation Chl...
- ☐ Std deviation Chl...

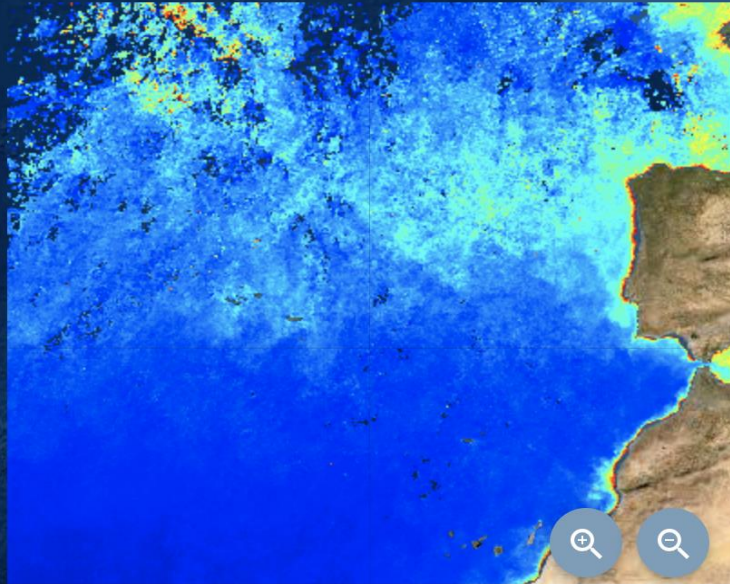
- ☐ Sea Level
- ☐ Sea Surface Salinity
- ☐ Sea Surface Temp...

HELP



NRT vs Time Series

Lat: 37.858 Lon: 10.811



Animation ☐ Frame Rate 10

Start Date 11/1/1997 End Date 12/1/2016





× ? HELP

Tejo - Buoy 1 - Temperature

< lite In-situ Sensor Biotelemetry >

>

Mondego

+

>

Tejo

✓

>

Buoy 1

✓

>

pH

☐

>

Temperature

☒

>

Salinity

☐

>

Dissolved oxygen

☐

>

Chlorophyll

☒

>

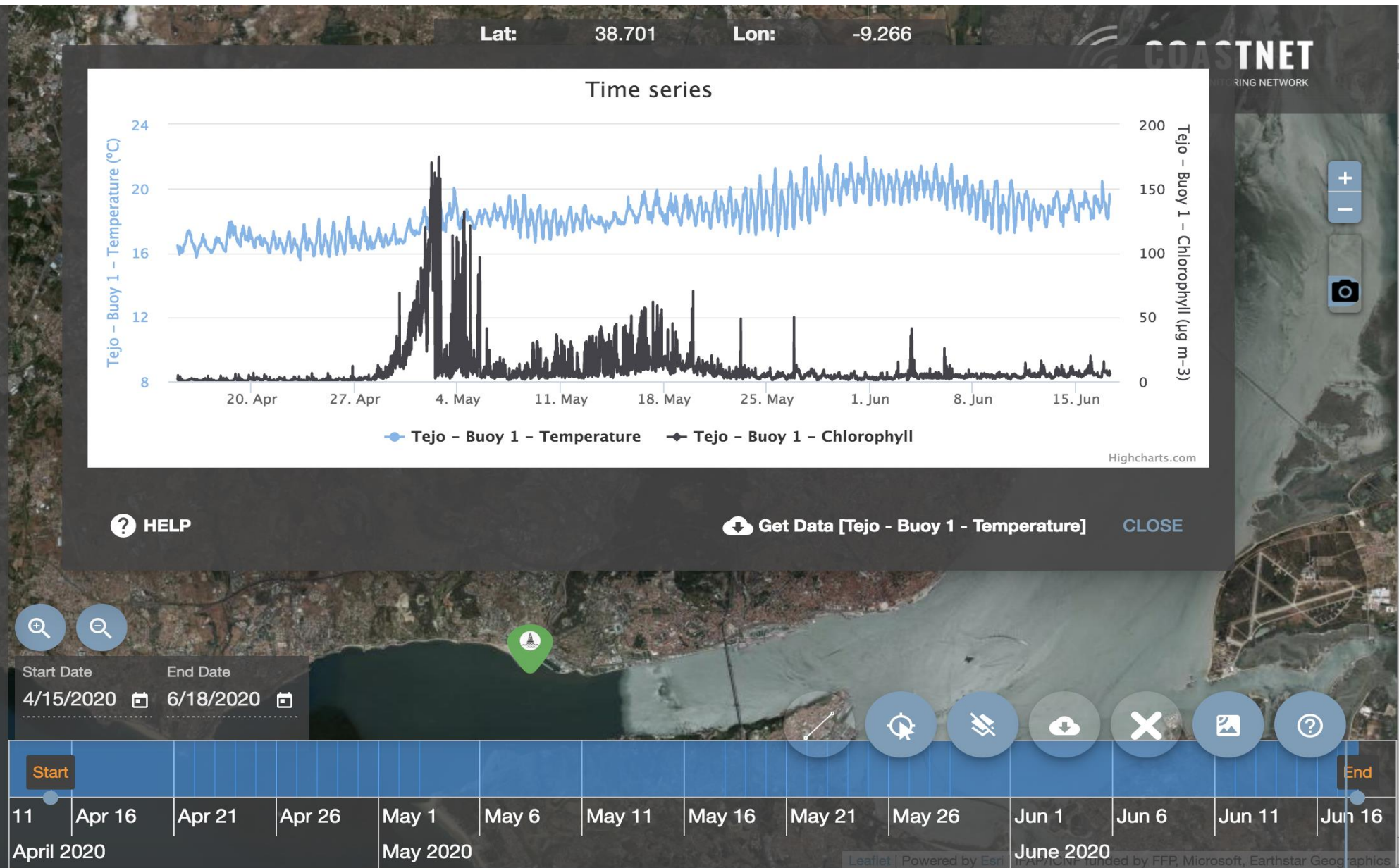
Buoy 2

+

>

Buoy 3

+





× ? HELP

Tejo - Buoy 1 - Temperature

< lite In-situ Sensor Biotek >

> Mondego +

> Tejo ✓ +

> Buoy 1 ✓ +

> Buoy 2 +

> Buoy 3 +

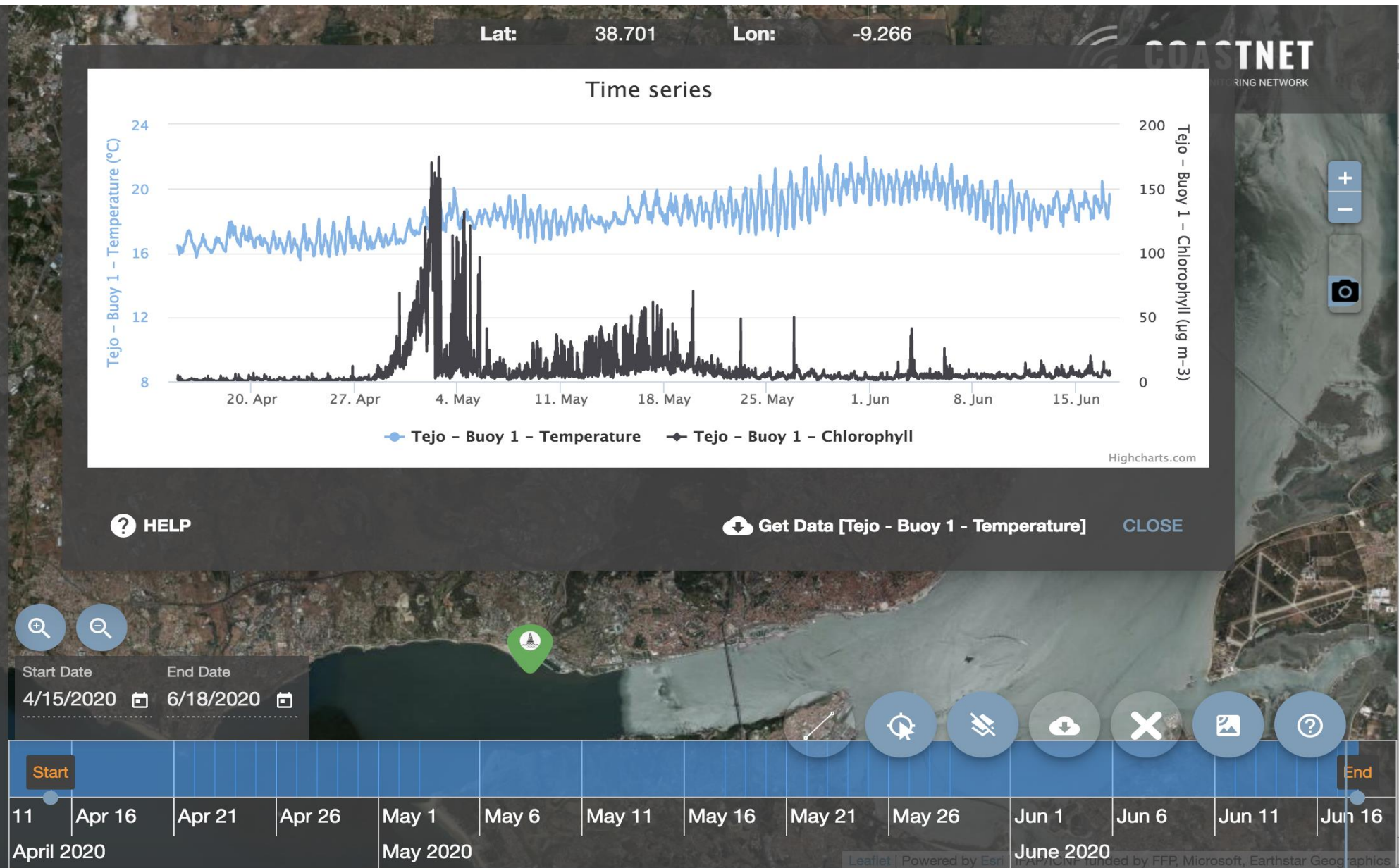
pH ☐

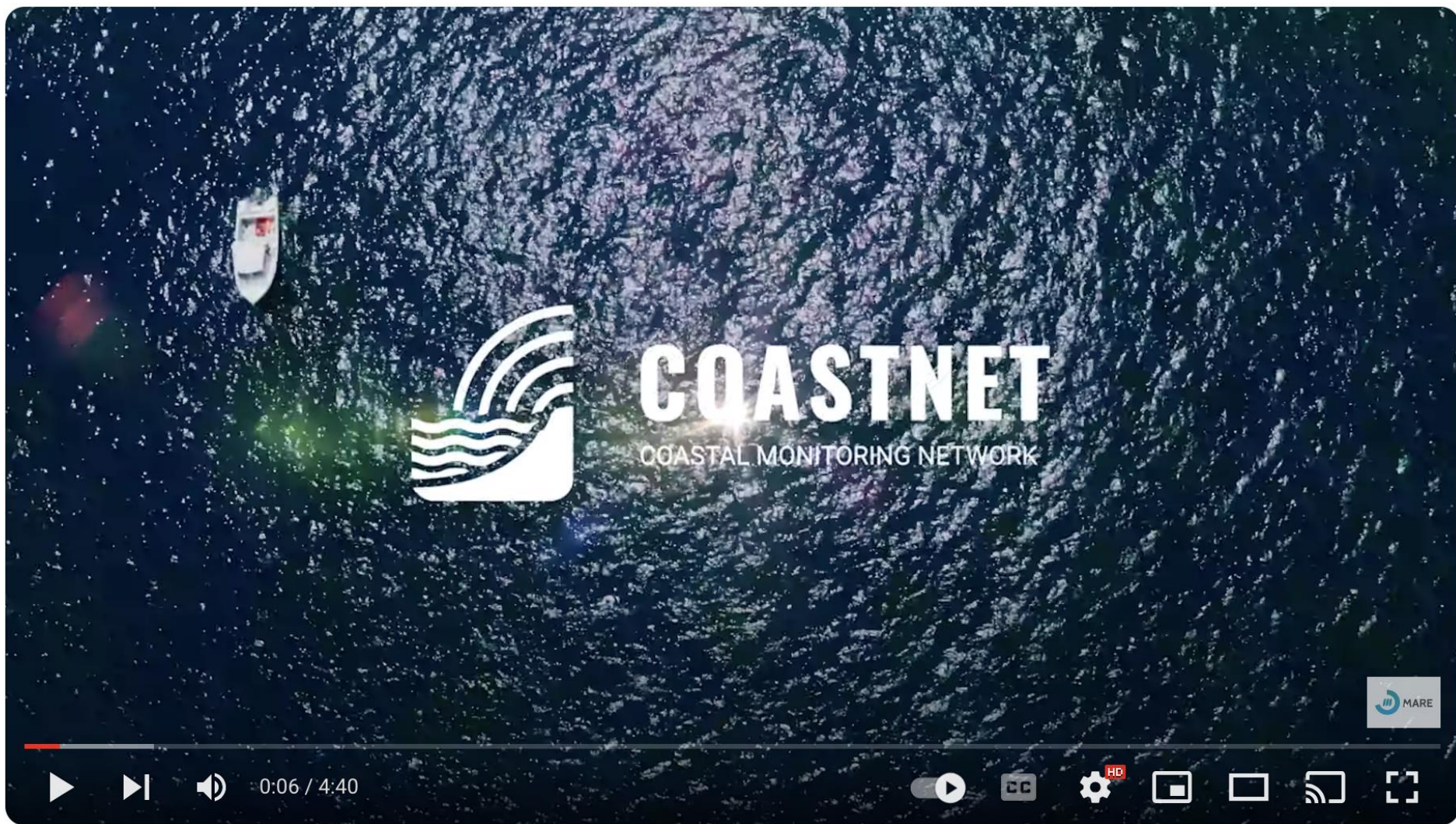
Temperature ☒

Salinity ☐

Dissolved oxygen ☐

Chlorophyll ☒





Conheça a Coastnet

<https://www.youtube.com/watch?v=Zu22kCPUTxM>



MARE - Centro de Ciências do Mar e do
364 subscribers

Subscribe



4



Share



Download





COASTNET
COASTAL MONITORING NETWORK



www.coastnet.pt • coastnet@mare-centre.pt



Ciências
ULisboa



UNIVERSIDADE
DE ÉVORA

Financiamento

Cofinanciado por:



UNIÃO EUROPEIA
Fundo Europeu
de Desenvolvimento Regional





Muito obrigada !

acbritto@fc.ul.pt